

PRECAST REINFORCED CONCRETE L-SHAPE RETAINING WALL

Retaining Wall / Open Drain



FEATURES OF SPEED CONCRETE L-SHAPE RETAINING WALL



SCI L-Shape units are available in all sizes.

APPLICATION

- Retaining Walls.
- Temporary or Permanent Storage Walls.
- Open Drains.

SCI L-Shape units are available with Dry Weather Flow (DWF) channels for the construction of open drains.

SCI L-Shape units are designed and manufactured through rigorous quality manufacturing processes, thus allowing easy and fast handling and installation processes.

ADVANTAGES

SCI L-Shape units have the following advantages over cast in-situ structures:

- Easily assembled or dismantled for service elsewhere.
- Reliable factory cast concrete.
- Temporary storage where permanent storage not required or impractical.
- Increase storage capacity.
- Maintenance eliminated.
- Can be off loaded from transport and erected in one operation.
- Assembly or dismantling can be attended to by unskilled labour.

DIMENSION OF L-SHAPE RETAINING WALL STANDARD LENGTH : 1000 mm

Normal Size	Common Dimensions			
b x h (mm x mm)	B (mm)	H (mm)	t (mm)	d mm
450 x 900	900	1050	150	300
750 x 1200	1200	1350	150	300
1050 x 1500	1500	1650	150	300
1350 x 1800	1800	1950	150	300
1650 x 2100	2100	2250	150	300
1950 x 2400	2400	2550	150	300
2100 x 2700	2700	2850	150	450
2400 x 3000	3050	3200	200	450
2550 x 3300	3350	3500	200	600
2700 x 3600	3500	3800	200	600
3000 x 3900	3800	4100	200	600
3300 x 4200	4100	4400	200	600



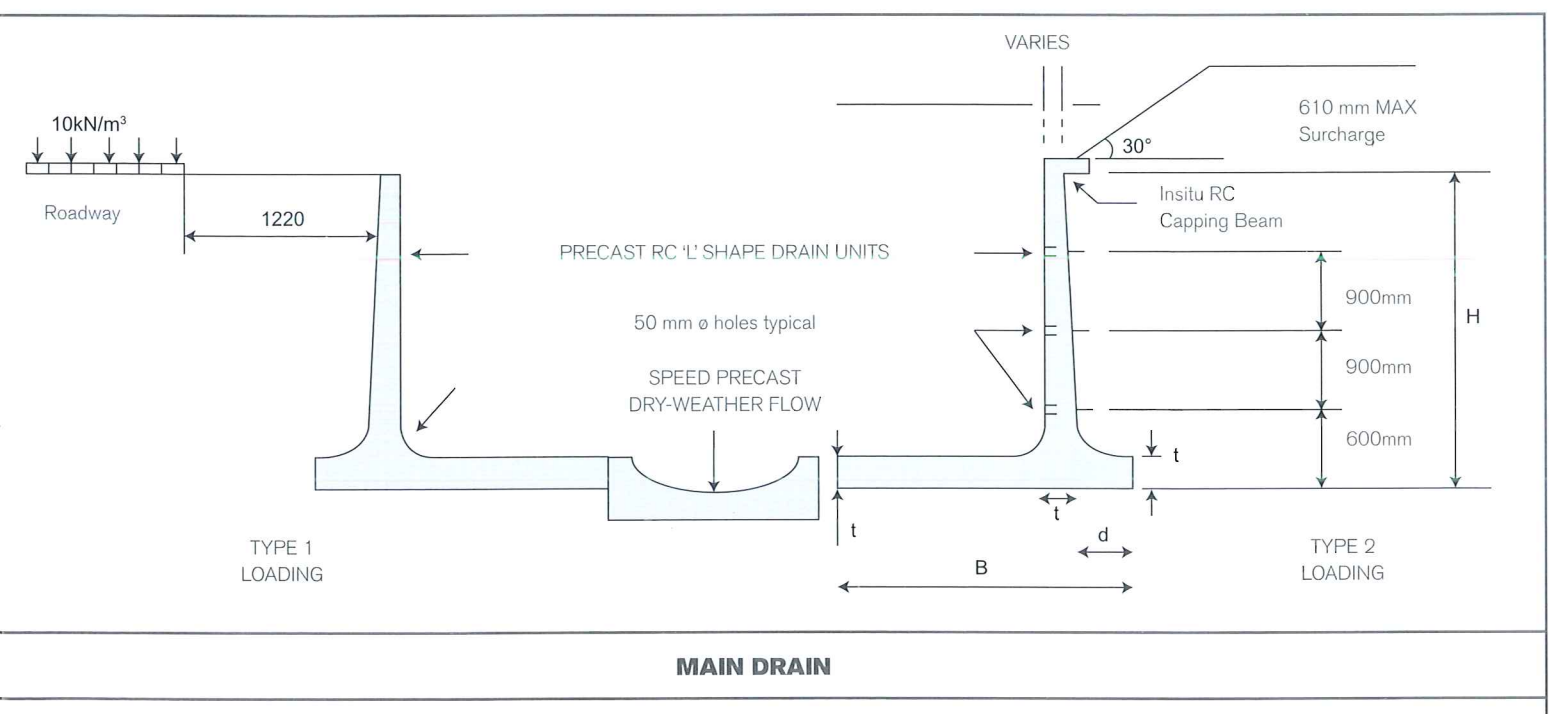
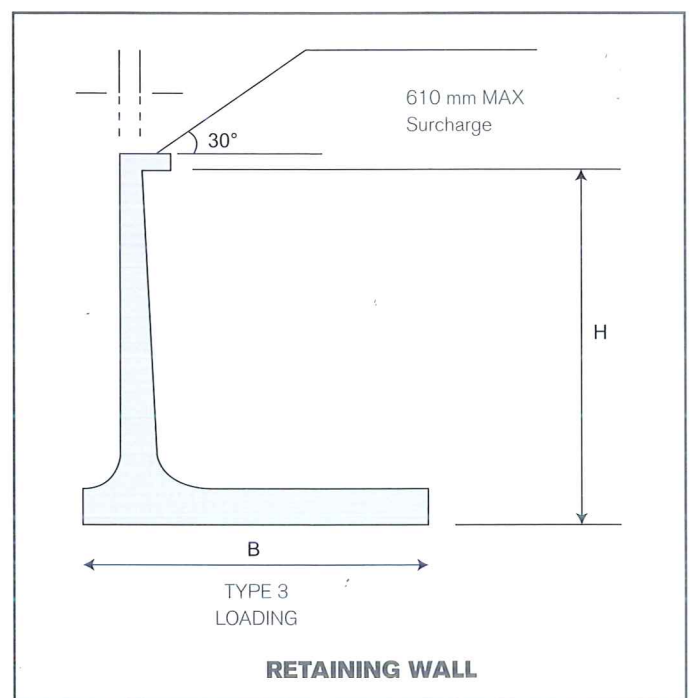
DESIGN & SPECIFICATIONS

SCI L-Shape units are designed to the requirements of BS 8110:1997 based on the following types of loading:

- Type 1:** MOT HA loading at 1.22m behind the wall (Open Drain)
- Type 2:** Surcharge of 610mm maximum with 30° slope, behind and above the wall (Open Drain)
- Type 3:** Surcharge of 610mm maximum with 30° slope (Retaining Wall)

Concrete grade = 30 Mpa – 40 Mpa
 Bulk density of soil backfill = 19 Kn/m³
 Angle of internal friction of soil backfill = 30°

SCI L-Shape units are designed with standard length of 1000mm. For other loading conditions or L-Shape sizes not shown in the tables here, please contact us for a special design.



MAIN DRAIN

Headquarter Office:

No.B-03-29 & B-03-30, Block B, Merchant Square, No.1,
Jalan Tropicana Selatan 1, PJU3, 47410 Petaling Jaya,
Selangor Darul Ehsan.

Tel No. : 603 -7885 0568
Fax No. : 603 -7885 0186
E-mail : info@speedconcrete.com
Sales Enquiry : sales@speedconcrete.com

Branch Office:

No 83-B, Jalan Harmonium 35/1, Taman Desa Tebrau
81100, Johor Bahru, Johor.

Tel No. : 607-352 3767
Fax No. : 607-352 3768
Mobile No. : 016-331 8475

Manufacture Sites:

RASA

Lot 4, Jalan Persiaran Zurah 1, Pusat Perindustrian Zurah,
44200 Rasa, Hulu Selangor, Selangor Darul Ehsan.

Tel No. : 603- 6057 4915 / 2898 / 2166
Mobile No. : 016-331 8476
Fax No. : 603- 6057 0552

KUANTAN

Lot 16, Kaw. Perindustrian Gebeng, 26080 Kuantan,
Pahang Darul Makmur.

Tel No. : 609- 583 4881 / 4858
Mobile No. : 016-331 8474
Fax No. : 609-583 4732

KLUANG

24 KM, Jalan Paloh, 86000 Kluang, Johor Darul Takzim.

Tel No. : 607- 810 6067
Mobile No. : 012- 237 0726
Fax No. : 607- 810 6076